



PIPING SOLUTIONS

www.pipingsolutions.com.au

Capability Statement



Introduction

Piping Solutions is a partnership between LJA Welding Pty Ltd and Tig Tech Pty Ltd. Directors Linkon Allan and Rowley Hill have developed and grown a successful engineering business over the last 17 years which has gained respect servicing industries such as Oil & Gas, Petro Chemical and Mineral Resources.

The company expanded its operations 5 years ago by establishing an in-house transport division and adding a sister company, Industrial Painting Solutions Pty Ltd, thus providing our client base a turnkey SMP contractor.

With two fully equipped workshops located in the Brisbane suburbs of Wakerley & New Chum (East & West Brisbane), Piping Solutions has greater access to local labour resources within the Brisbane region.

Our multi discipline workforce is highly skilled and experienced in processing and fabricating a wide variety of materials, inclusive of carbon steels, alloy steels, chrome moly, stainless steels, duplex and super duplex.

We have the experience and resources to meet projects which require design, drafting, estimating, scheduling, fabrication, non-destructive testing, hydrostatic testing, surface treatment and site installations.



Oil / Gas Wellhead Metering Skid - Oil Search

Engineering projects are completed in accordance with project specifications, Australian codes & standards and relevant government regulations. Previous projects have been completed complying with Australian & overseas standards such as, AS4041, AS2885, AS1210, ASME IX and ASME B31.3 & ASME B31.1.



High Pressure Gas Tie In Pipe Spool - GLNG

Piping Solutions has a proven track record in providing expert resources for on-site installation projects.

Site capabilities include delivery and installation of pressure vessels, complex pipe spooling, tanks, fabricated steelwork and associated items.

The supply of quality personnel can be offered to fulfil positions in project management, engineering, supervision, coded welding, pipe & mechanical fitting, crane driver, riggers, scaffolding and trade assistance roles for short or long term projects.

Piping Solutions is always open to suggestions from its clients and employees that will enhance its business model.

Pride is taken in being a proactive and creative organisation, providing innovative solutions.

Piping Solutions is an ISO9001:2015 Registered Company.

Experience

Piping Solution has over 45 years' combined experience in prefabrication and site installation of turnkey projects both small and large including, pipe spooling, tanks, pressure vessels, processing skids and structural steel components.

Piping Solutions has delivered engineering projects in the areas of mineral & resources, oil & gas, petrol chemical, fuel refineries, tank farms, sugar mills, power stations, abattoirs, water treatment plants, breweries, airports, and food & beverage processing plants.

Our experience as a contractor that delivers on its commitments has enabled us to become a qualified supplier of engineering services to major sector clients including Shell, BP, Origin Energy, Santos, Arrow Energy, Oil Search, Caltex, BHP-B/BMA, Rio Tinto, Yancoal, Downer, Tenix, QGC, Laing O'Rourke, Monadelphous, Department of Defence and Incitec Pivot meeting all required client specifications and standards.



Upstream Water & Gas Riser Legs - QCLNG

Engineering Design

Piping Solutions has in-house design and drafting capability as well as established partners in this field. Piping Solutions has recently completed projects including pig launchers & receivers, slug catchers, pressure vessels, specialised low & high pressure pipe spooling and associated structural components. A list of recent design / drafting experiences can be located in our completed projects list below.



High Pressure Gas Piping Installation - GLNG

Our Facilities

Darwin Office - 19 Kitchener Drive, NT 0800

Brisbane Head Office - Wakerley

1/107 Ingleston Road, Wakerley 4154

Admin buildings and main workshop

60m x 20m -1200m² undercover fabrication

Three overhead cranes

Multiple heavy duty pipe rotators

Pipe racking & storage

NDT & Hydrostatic Testing areas

Lay down Area - 1800m²

10 tonne yard crane

Ipswich - New Chum

1/68 Chum Street, New Chum 4303

Office and admin buildings and workshop

60m x 40m -2400m² undercover fabrication

Multiple heavy duty pipe rotators & rollers

Sub-arc welding machines

NDT & Hydrostatic Testing areas

Pre assemble units & skid assembly areas

Pipe racking & storage

Lay down area 30,000m²

12 tonne yard crane & 6 tonne track crane

Ipswich – New Chum

Industrial Painting Solutions

2/68 Chum Street, New Chum 4303

Office & storage buildings, lay down and painting workshop

100m x 70m -7000m² undercover fabrication

Abrasive grit blasting

Multiple self-contained painting bays

2 x 12 tonne yard crane

Lay down 24,300 m²

Workshop Fabrication

Pipe spooling can be produced at a rate of 5,000 diameter inches of x-ray quality welding, achieved in a standard working week, based on 100NB to 150NB pipe.

In addition to pipe spooling a comprehensive range of engineering services can be offer inclusive of the following;

- Structural steel
- Platforms and stairways
- Conveyors
- Pressure vessels
- Doubled-walled piping
- Shell and tube heat exchanges
- Process skids
- Plant breakdown repairs
- Rolling, shaping & assembling of structural steel
- Specialty items for off shore installations



Dual Lift of 600nb Sch160 x 24m Pipe Spool - GLNG

Surface Treatment

Industrial Painting Solutions have a committed team that can facilitate all your blasting and surface treatment requirements.

Specialised surface treatment, protective wrapping and holiday testing of underground services are available to meet Australian Standards and client specific specifications.

Items are inspected by qualified personnel at each key step within the protective coating process.

Upon completion of work all relevant records & reports are submitted in accordance with project specific manufacture data requirements.



400nb 1500# Painted Valves during Final Inspection

Site Labour & Equipment Hire

We currently have in excess of 1000 personnel registered for work and our data base is continuously growing with our business.

We pride ourselves on being able to deliver a committed work force at short notice which has proven to be achievable due to the Labour Pool assessable from current staffing levels and previous projects.

Site employees undertake medicals, inductions and verification of competencies.

All welding personnel are tested in-house and qualified to project specific weld procedures prior to being mobilised to site.

We continuously monitor government legislative changes which provides us with a trouble free and cost effective workplace.

Piping Solutions can supply personnel with all relevant plant & equipment to ensure a cost effective project. Equipment can be supplied in custom made lockable containers fitted out specifically for structural, mechanical & piping installations.

Quality Assurance

Piping Solutions takes pride in its commitment to Quality, we continually strive to improve our work quality and supporting documentation.

Through this process we have successfully developed our own customised “spool tracker data base system”, which is pivotal in producing products that are far ahead of the field in terms of traceability, tracking progress through the production phase and progress reporting.

The spool tracker allows us to provide live reporting to our clients via a secured web site (accessible 24 hours a day) on the status of each spool in their project commencing from receipt of materials & IFC drawings, workshop production, delivery to site & site installation.

These systems have allowed us to provide our clients with a high level of transparency and confidence in Project delivery.



24m long Large Bore Heavy Wall Piping

On project completion a comprehensive Manufactures Data Report is generated and submitted for client review and approval.

Transport

Piping Solutions can facilitate the delivery of goods to site utilising its in house transport division, this has proven to be cost effective and eliminates potential delays that can be experience when engaging subcontractors.

The storage & transportation of oversize and wide loads are often performed by Piping Solutions.



Gas Piping packaged on Flat Racks - APLNG

We commonly use Flat Racks to minimize down time when unloading on site, this allows site to schedule the unloading goods to a convenient time. This has proven to be a safe method of loading and unloading goods as to minimise risks associated with working at heights.

Various Project Photos



4 Crane Lift – RAAF Amberley



Co2 Compressors Skid - Gas Technology



Skid Pipe Work Compressor Station – Wasco / Senex



Heat Exchangers - Shell



Stainless Aviation Fuel Lines – RAAF Amberley



Stainless Aviation Fuel Tanks – RAAF Amberley



Stainless Aviation Fuel Tanks – RAAF Amberley



Piping Solutions Workshop 1
1/107 Ingleston Rd, Wakerley

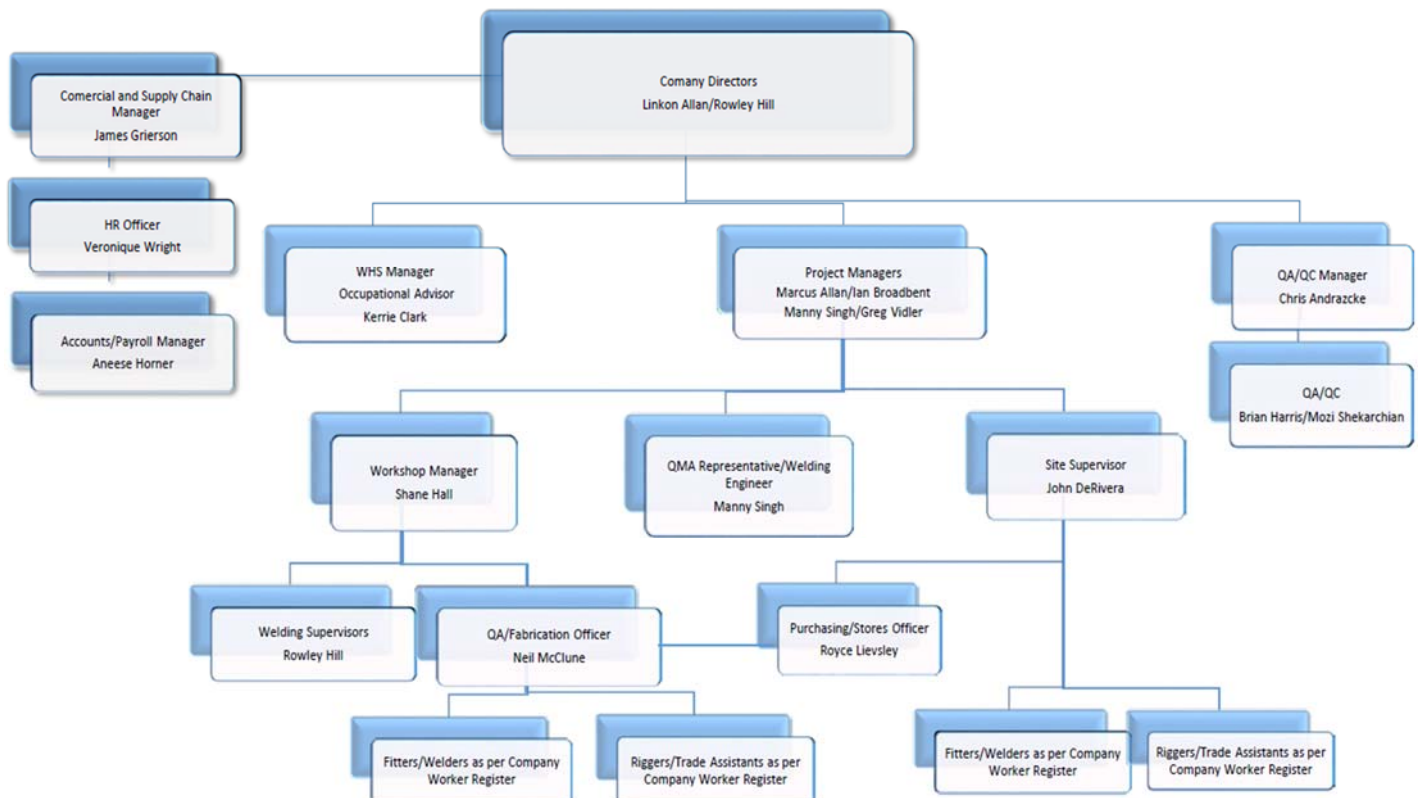


Piping Solutions Workshop 2
66-68 Chum Street, New Chum

Company Details

Company Information	
Company Name:	Piping Solutions
ABN No.	18 601 747 124
Postal Address	PO BOX 513, Cannon Hill 4170
Phone:	(07) 3390 5624
Fax:	(07) 3390 5620
Wakerley Workshop:	1/107 Ingleston Road, Wakerley QLD 4154
New Chum Workshop:	66-68 Chum Street, New Chum QLD 4303
Darwin Office	19 Kitchener Drive, NT 0800
Contact Details	
Name	Position
Linkon Allan	Director
Rowley Hill	Director
James Grierson	Commercial Manager
Marcus Allan	Project Manager
Ian Broadbent	Project Manager
Greg Vidler	Project Manager
Manny Singh	Project Manager
John De Rivera	Project Manager
Allan Mackenzie	WHS Officer
Chris Andrackze	QA Manager
Veronique Wright	HR / ER Manager
Aneese Horner	Admin Manager

Lines of Authority & Communication



Clients / Completed Contracts				
Project Title	Scope of Work	Approximate Value	Client	Contact Name:
Fuji Air Port	Joint User Hydrant Installation Upgrade – Site installation of new piping system, inclusive of the installation, testing and commissioning of pumps, valves and filters.	1M	JUHI / Pacific Petroleum	Jeff Allan
RAAF Townsville QLD	Upgrade DFI – Inclusive the supply of valving, pumps, filters, piping, ect, site installation and commissioning.	1.5M	St Hillier's / Commonwealth of Australia	Reece Beutel
Garden Island Naval Base Sydney (Stage 1)	Piping design, generation of fabrication drawings, supply of pumps, valves, piping, supports, site installation and commissioning.	7.M	Lendlease / Commonwealth of Australia	Stefan Kleynhans
RAAF Amberly QLD	Upgrade DFI – Inclusive the supply of valving, pumps, filters, piping, ect, site installation and commissioning.	1.9M	Duratec / Commonwealth of Australia	Douglas Blackett
RAAF Richmond NSW	Upgrade DFI – Inclusive the supply of valving, pumps, filters, piping, ect, site installation and commissioning.	2M	Duratec / Commonwealth of Australia	Douglas Blackett
Garden Island Naval Base Sydney (Stage 2)	Piping design, generation of fabrication drawings, supply of tanks, pumps, filters, valves, piping, supports, site installation and commissioning of both mechanical and E&I components.	20M	Lendlease / Commonwealth of Australia	Elie Sakr
RAAF William's Town NSW	Upgrade DFI – Inclusive the supply of valving, pumps, filters, piping, ect, site installation and commissioning.	2M	St Hillier's / Commonwealth of Australia	Reece Beutel
Sunshine Coast Air Port	Pre fabrication of pipe spooling and site installation of pumps, valves, filters, hydrant points, inclusive of testing and commissioning.	1.7M	John Holland	Tom Borchardt
Growler Base Facility, RAAF Base Amberley	Fabrication and Installation (inclusive of Civil and Electrical works) SS Fuel Hydrant Lines, Hydrant Refuelling Points, Emergency Stops, GSE Diesel / AVG Bowsers.	\$15M	Lendlease / Commonwealth of Australia	Kevin Lamb
ETC DFI, RAAF Amberley	Fabrication and installation of Pipe Spooling for Fuel Test Cell works / Pipe Supports	\$1M	St Hillier's/ Commonwealth of Australia	Reece Beutel

BFA Base Facility, RAAF Amberley	Fabrication and Installation (inclusive of Civil and Electrical works) of 1.5km of SS Fuel Hydrant Lines, Hydrant Refuelling Points, Emergency Stops, GSE Diesel / AVG Bowsers.	\$5.2M	Laing O'Rourke / Commonwealth of Australia	Marcus Davis
BP Bulwer Fuel Oil Lines	Fabrication and installation of Pipe Spooling and Skids	\$1.1M	UGL	Matt Cullen
C17 Maintenance Facility, RAAF Amberley	Fabrication and Installation of SS Fuel Hydrant lines, Hydrant Refuelling Points, Emergency Stops and GSE Diesel Bowsers.	\$3M	CPB / Commonwealth of Australia	Fraser Wright
Senex Compression Station, QLD	Pipe Spooling Fabrication / Skid Assembly works	\$2M	Wasco	Simon Colahan
Atlas Lateral Project (Jemena)	Pipe Spooling Fabrication / Skid Assembly works	\$0.8M	Valmec	Peter Drury
Atlas Lateral Project (Jemena)	Pig Launcher / Receiver (SOL & EOL facilities)	\$0.3M	Spiecapag	Simon Cox
Bayswater Power Station	Shutdown works – Weld Repairs	\$1.8M	Toshiba International Corporation	Brett Ikin
APLNG Gathering EPC Panel Contract	Fabrication of HPV's / LPD's	\$1.2M	CPB Contractors	Debbie Bradder
HID Fab Package, QLD	Pipe Spooling Fabrication / Skid Assembly works	\$2.3M	Rio Tinto (RTA Yarwun)	Peter Smith
Western Surat Gas Project - Phase 3 PAR's & Skids	Supply, fabricate, test, surface treat, pipe spooling and skids. Trial assemble and testings. Delivery to site	\$1.6M	WASCO	Simon Colahan
INPEX Ichthys Project Combined Cycle Power Plant	Carry out pipe rectifications and site installation on 5 x Heat Recovery Steam Generators (HRSG's) in the CCPP.	\$21M	GE Power & Water	Baden Watts
INPEX Ichthys Project Bulk Storage Export Tanks	Supply white collar and craft labour to install structural steel and piping systems on 1 x Butane, 1 x Propane and 2 Liquefied Natural Gas Tanks	\$9M	Laing O'Rourke / Monadelphous	Quentin Allen
INPEX Ichthys Project Combined Cycle Power Plant	Design, supply materials, fabricate, test and protective coating of P91 Condensate Seal Pots for the CCPP.	\$1.8M	JKC / CH2-UGL JV	Yuki Nakamura
INPEX Ichthys Project Combined Cycle Power Plant	Supply white collar and craft labour to facilitate repairs on Large Bore, Heavy Wall P91 Chrome Molly Pipe in the CCPP.	\$1.8M	S&TC	Kyung-In Shin
Moura T7000 Improve SMP (Tank, Piping & Structural)	Work shop pre-fabrication, on-site installation of pipe work, Installation of new supports and pipe line and valves for new facility	\$0.4M	Dyno Nobel Asia Pacific	Gary Bodnar

HMAS Cairns-Fuel Installation Works	Fabrication and Installation of Fuel Hydrant Fuel Line	\$1.3M	FKG / Commonwealth of Australia	Alex Plowman
HPU Fuel Gas Conversion Project	Fabrication and Installation of HPU Fuel Gas Conversion Pipe Spooling	\$1M	QGC	Maziar Ebrahimi
MJJV Project, PNG	Fabrication and Installation of Portable Pigging Skids for PNG	\$1M	MJJV – PNG	Nick Porter
Sulphuric Acid Conversion Project, Gladstone	Fabrication and Installation of Pipe Spooling works	\$1.1M	IXOM Operations / KBR	Ray Anderson
BP Bulwer Fuel Oil Lines	Fabrication and installation of Pipe Spooling and Skids	\$2.1M	BP Bulwer / Jacobs	Glen Clothier
Rectification of Free Issue Materials	Reface Flanges, Protective Coatings, Weld inspections and Logistics Co-ordination for Site Deliveries	\$2.6M	Laing O'Rourke – Origin Energy	Matt Allan
Spring Gully Compressor Station	Supply, fabricate, test, surface treat and assemble.	\$.6M	Monadelphous – Origin Energy	Barry Dale
Various Production Process Skids for PNG operations	Supply, fabricate, test, surface treat assembles and package, oil and gas processing skids.	\$1.2M	Oil Search	Ben Devine
Wallumbilla to Comet Ridge Expansion	Fabrication, Surface Treatment & Testing of Large Bore, Heavy Wall pipe spools and associated items.	\$1.7M	Tenix - Santos	Vaughn Clouston
Multiple Field test manifolds, Pigging and interconnecting skids	Supply, fabricate, test, surface treat and assemble.	\$1.7M	Senex	TBA
52 sets of Gas Skid Piping	Supply, fabricate, test, surface treat, assemble and package, oil and gas processing skids.	\$1.4M	Eneraque - QGC	Aed MacPhaidin
APLNG Upstream Facility Works Compressor Station Pipe Spooling	Fabrication of pipe spooling, NDT, protective coating, delivery to site for all Early Flares and 7 x GPF's.	\$15.1M	Laing O'Rourke / Origin APLNG	David Pfeffer
Talinga Compression Facility	Fabrication, protective coating of urgent pipe spools for the Talinga Facility.	\$.2M	Monadelphous - Origin Energy	Barry Dale
APLNG Upstream Facility Works	Subcontract of coded welders, Pipe Fitters etc. For the Site Installation of Compressor Station Piping (7No. GPF's) on various site for several installation contractors.	\$36M	Laing O'Rourke / Origin APLNG	David Pfeffer
Incitec Pivot 3 rd HHE Compressor project	Work shop pre fabrication and onsite installation of pipe work, Extensive site installation and rectification of ammonia/urea lines in live facility. Tie in lines, new valves, pipe supports & tracers	\$2.1M	Incitec Pivot	Brad Love

Origin Energy Hot Bypass	Site installation of prefabricated gas pipe work	\$.15M	Enerflex Process	Rick Zhang
Shell Pinkenba Terminal Tank and pipe removal	Site preparation and removal of redundant diesel oil tanks. Removal of pipe spools, valves, asbestos gaskets and tanks.	\$.15M	Shell	Bill Maslen
Caltex Lytton refinery Pump bay Tie ins	Work shop pre fabrication, on-site installation of pipe work, Installation of new supports and pipe line and valves for new facility	\$.4M	Caltex Lytton Refinery	Trevor Bernard
BP Bitumen Site Maintenance works	Site maintenance labour, Welding and repair work to Bitumen and Hot Oil lines and pumping facility.	Schedule of Rates	BP Bitumen	Mark Jones
RAAF Base Amberley Jet Fuel Pump Bay and Tank Storage.	Work shop pre fabrication, on-site installation of pipe work, site fabrication of vertical storage tanks and associated piping. Rectification, removal of jet fuel pumping station and associated piping	\$4.6M	John Holland / Commonwealth of Australia	Paul Gooley
Karratha Airport Expansion	Fabrication of Stainless Steel pipe spools	\$1.M	Shell	Graeme Cotter
TEG Dehydration Units/Skids	Work shop fabrication of gas pipe work and installation of piping on to skids	\$2.8M	Enerflex / QGC	Chris Randall
BP Tank & Piping Modifications	Pre fabrication pipe spools & site installation. Rectification of tank roof, floor sheets, installation of valves and hot oil lines, tank cleaning, sandblasting and painting.	\$1.4M	BP Bitumen	Mark Jones
Wallumbilla QSN3 Compressor Expansion	Work shop pre fabrication of pipe spools	\$1M	Enerflex /Epic Energy	Chris Randall
Moranbah Gas Plant - Node 2 Expansion	Work shop fabrication of pipe work and installation of piping	\$.4M	Clough CSG / Arrow Energy	George Solesbury
Well Head Gas Separator Skid Modifications	Modification and rectification of wellhead separator piping & skids.	\$1.3M	QGC	Daniel Woods QGC
Cameby Downs Coal Mine	Pre fabrication pipe spools and installation of structural steel, conveyors, pumps and piping	\$8M	Syntech Resources	Steve Bradley
Luggage Point Advance Water Treatment Plant	Pre fabrication stainless steel pipe spools & site installation	\$2M	Luggage Point Alliance	David Pfeffer O'Rourke
Kenya Compressor Station Expansion	Work shop pre fabrication of pipe spools	\$1.6M	QGC	Don Maskell QGC
Tipperary Gas Compressor Station Expansion	Work shop fabrication of pipe work and installation of gas piping	\$1M	Delco	Don Maskell QGC

Gas Riser Legs & Water Riser Legs (Photo Below)	Supply, fabricate, test, surface treat, assemble and deliver.	\$6M	Murphy Pipe & Civil - QGC	Phillip Holdsworth
---	---	------	---------------------------	--------------------